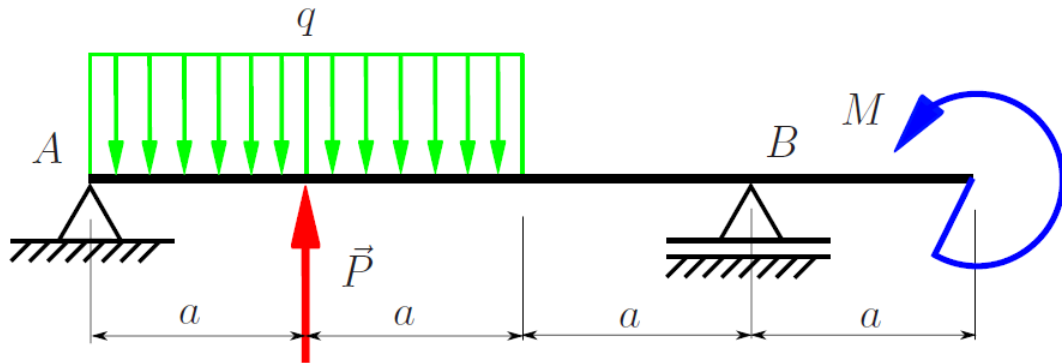


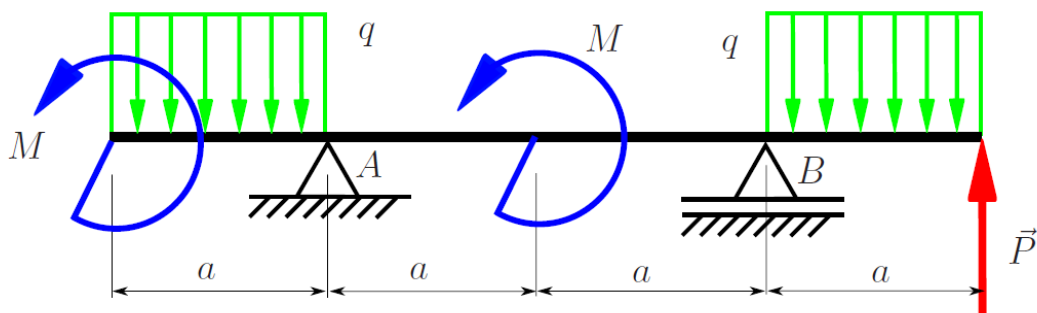
Beams – problems

Problems in the field: Calculation of internal forces in simple beams. The content for all variants of problems is identical. Determine the internal forces in the beam, draw charts $M(x)$, $T(x)$, $N(x)$.
 Given data: $P = qa$, $M = qa^2$, $\alpha = 60^\circ$.

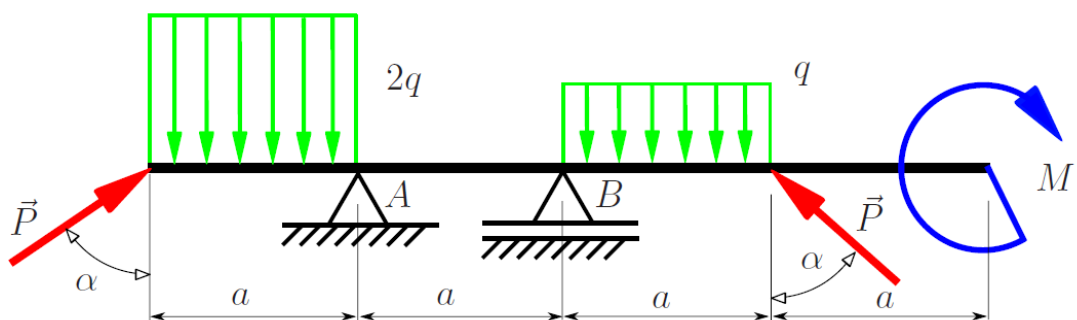
1.



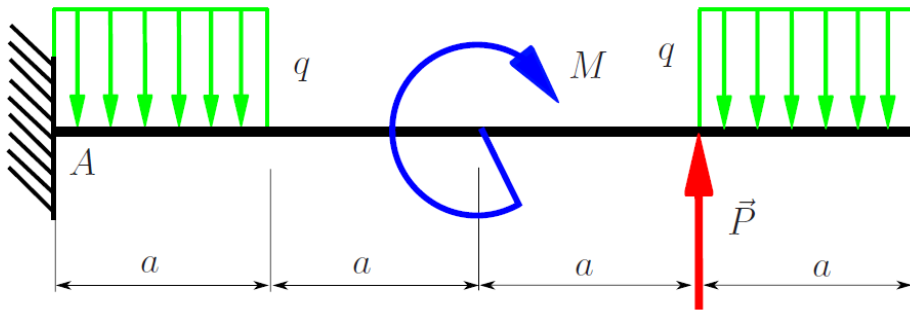
2.



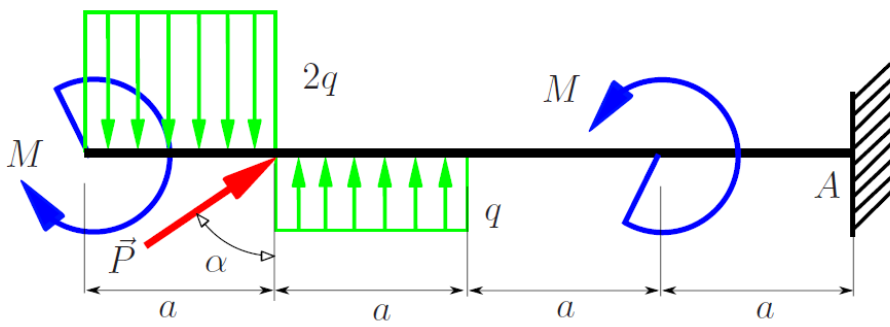
3.



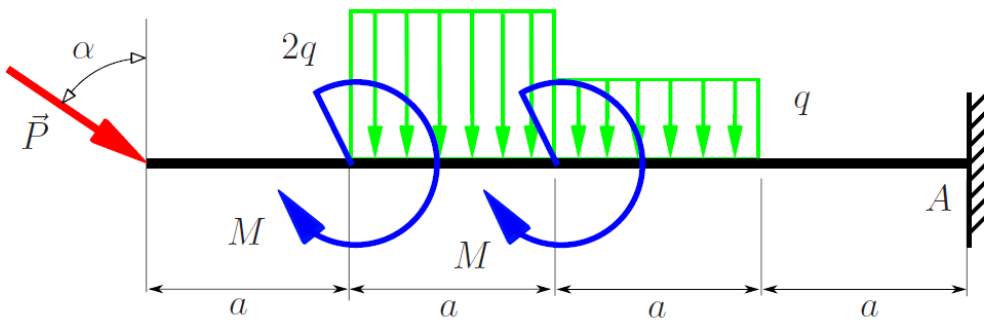
4.



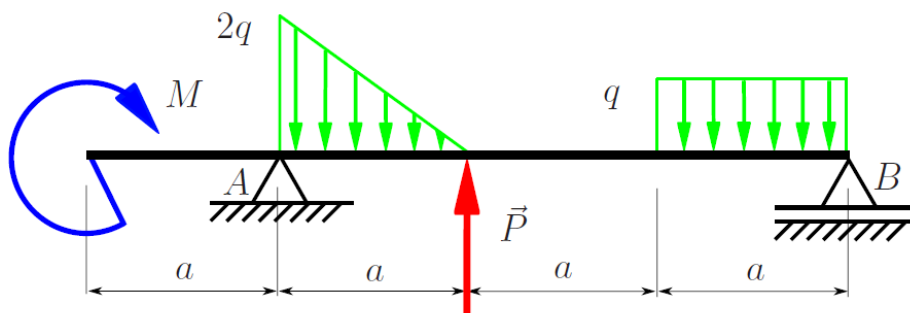
5.

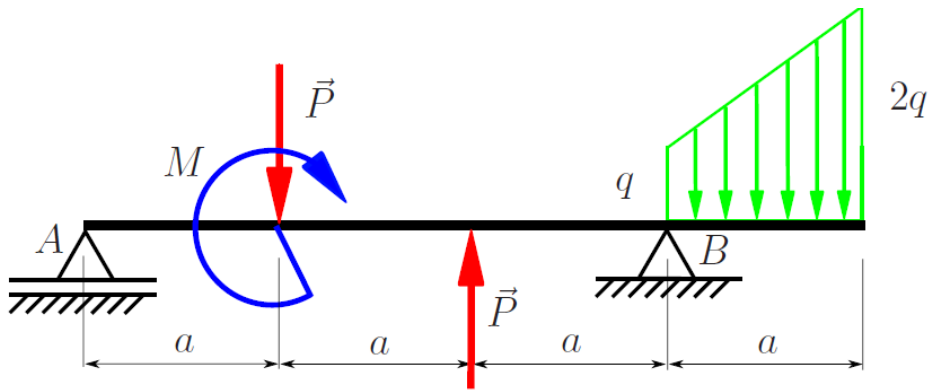


6.

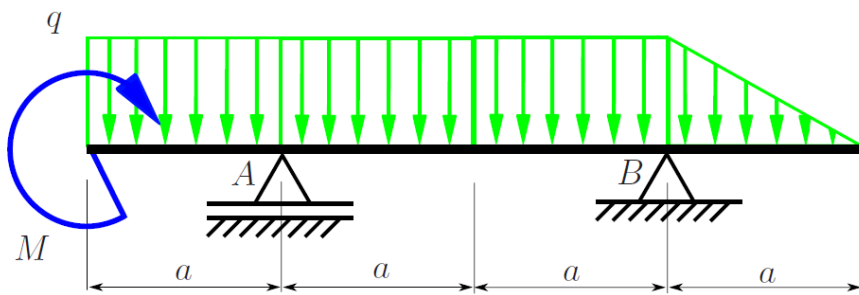


7.



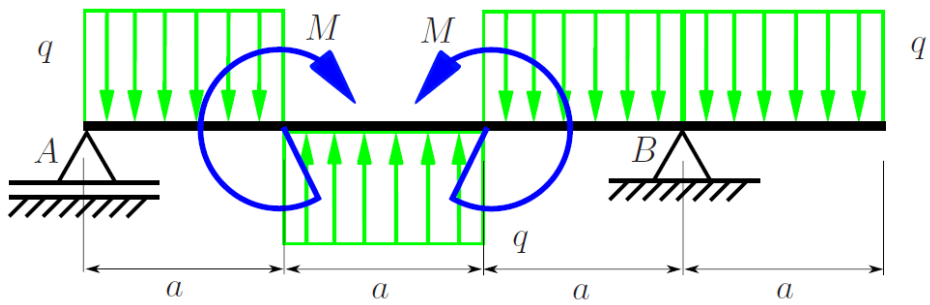


8.



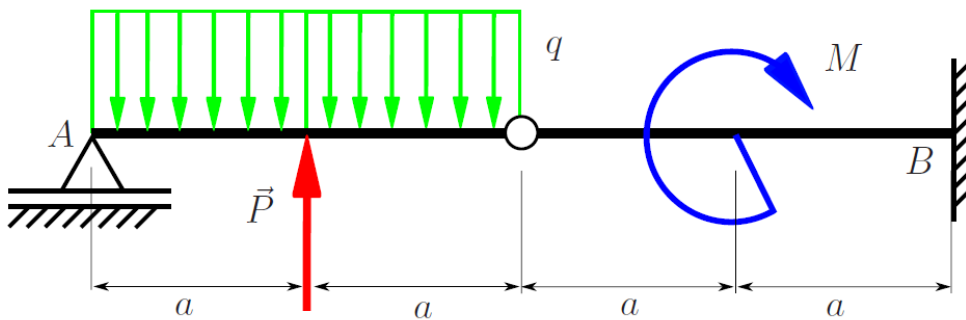
9.

10.

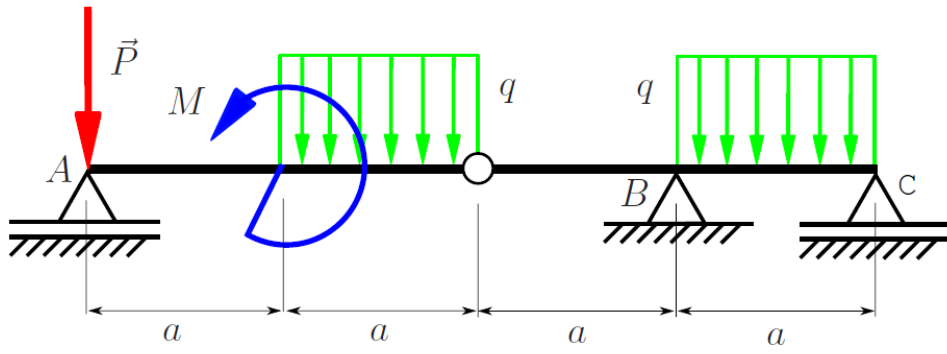


Beams with joints

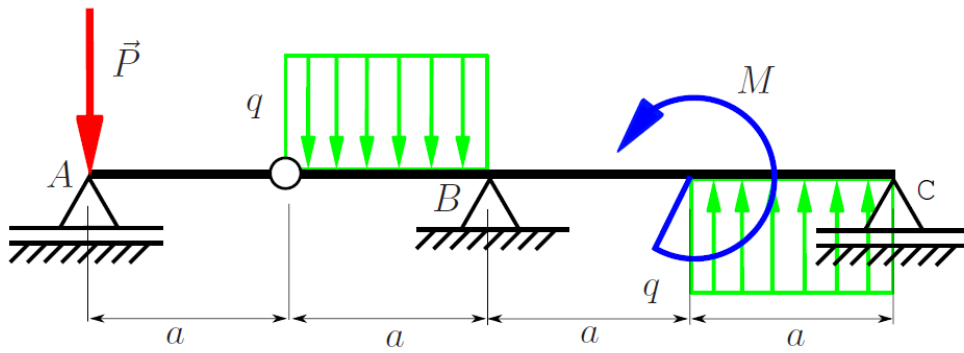
1.



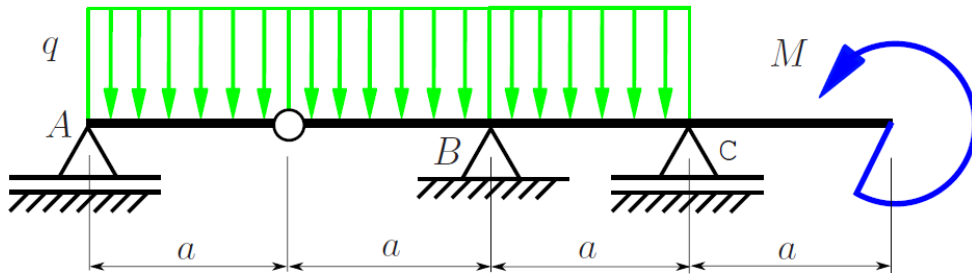
2.



3.



4.



5.

